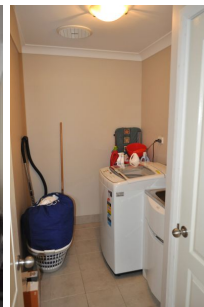
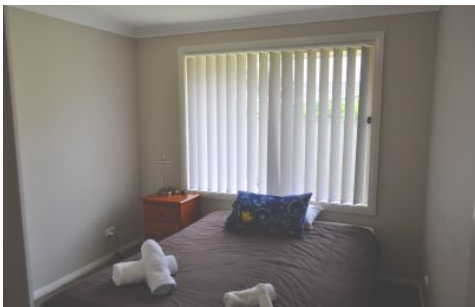


# Flemings



## 4B Bethany Place Cootamundra NSW

3 2 1

Immaculately presented, three-bedroom, two-bathroom, one-car duplex located adjacent to Cootamundra Hospital and Medical Centre.

**View :** <https://www.flemingspropertyservices.com/sale/nsw/riverina/cootamundra/residential/house/6595942>

The property features a large open-plan kitchen and family room, internal laundry, main bedroom with walk-in-robe and ensuite, two large guest bedrooms with built-in wardrobes and a modern bathroom with separate bath and shower. The unit is positioned on a generous enclosed block with low maintenance gardens.

Features include;

- Long term tenant paying \$280/week (market rent is \$300/week).
- 3-bedrooms, 2-bathroom, 1-car
- Open plan kitchen/living area



**Chris Ryan**  
**02 6942 2480**

# 4b Bethany Place, Cootamundra 1. Floor

