

Flemings



21 Wall Avenue Cootamundra NSW

3 1 1

Excellent opportunity for owner occupiers or investors to purchase a flexible three bedroom home on an easy to maintain, level and regular shaped 689sqm block. The property comprises of 3 generous bedrooms, functional kitchen & bathroom and an open-plan living/dining room.

Land Size : 689 sqm
View : <https://www.flemingspropertyservices.com/sale/nsw/riverina/cootamundra/residential/home/6825542>

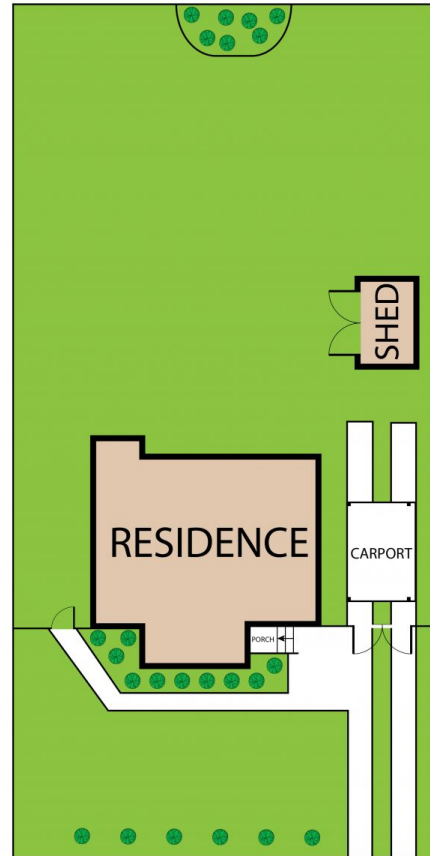
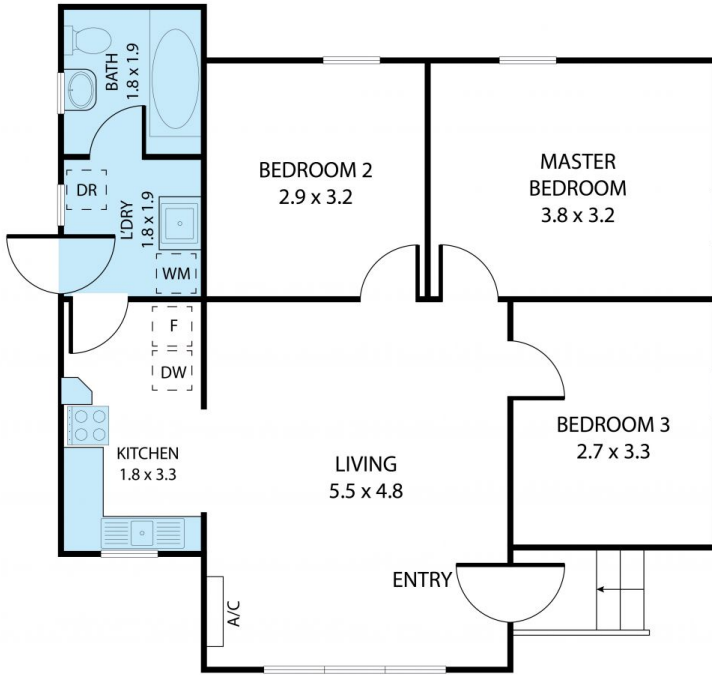
Features include;

- Leased to a long-term tenant for \$250.00 per week.
- 689sqm total land area.
- Flat and rectangular shaped block.
- 3-bedrooms.
- Reverse-cycle air-conditioning.
- Large back yard with single carport.

Positioned on Wall Avenue, opposite Cameron Park, within close proximity to shops, restaurants and cafes in the



Chris Ryan
02 6942 2480



21 Wall Avenue, Cootamundra 2590

TOTAL APPROX. FLOOR AREA 65 SQ.M

Whilst every attempt has been made to ensure the accuracy of the floor plan contained here, measurements of doors, windows, rooms and any other items are approximate and no responsibility is taken for any error, omission, or misstatement. This plan is for illustrative purposes only and should be used as such by any prospective purchaser.

Flemings