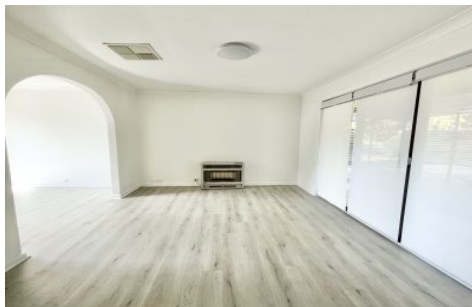
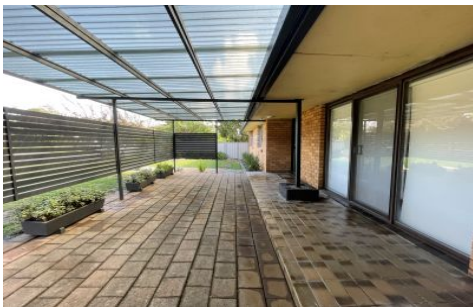


Flemings



2 Charles Crescent Young NSW

3  1  2 

Flemings Young are pleased to present 2 Charles Crescent, Young to the market for lease.

This beautifully renovated three bedroom home is situated in a quiet & peaceful location.

Features include:

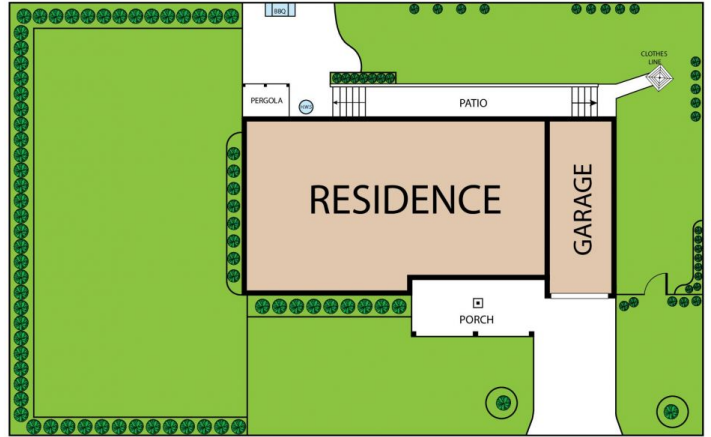
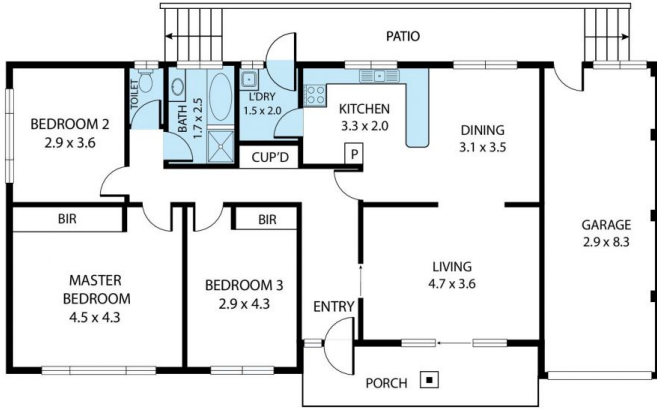
- Freshly renovated throughout
- Three bedrooms - two with built-ins
- Bathroom with shower, bath and separate toilet
- Large family room, opening onto a covered patio area
- Ducted evaporative cooling
- Natural gas heating
- Open plan kitchen dining area
- Spacious back yard with established trees, lawns and gardens

Land Size : 835 sqm

View : <https://www.flemingspropertyservices.com/lease/nsw/capital-monaro-snowy/young/residential/house/7260379>



Imogen Gillies
02 6382 3883



2 Charles Crescent, Young 2594

TOTAL APPROX. FLOOR AREA 133 SQ.M

Whilst every attempt has been made to ensure the accuracy of the floor plan contained here, measurements of doors, windows, rooms and any other items are approximate and no responsibility is taken for any error, omission, or misstatement. This plan is for illustrative purposes only and should be used as such by any prospective purchaser.

Flemings